



Installation Manual

Noritz CR60 Rack – Wheel Dolly Kit

Purpose

The Noritz CR60 Rack – Wheel Dolly Kit provides the installer a much easier method of moving the complete rack to the appropriate location. Step by step instructions on installation of CR60 rack wheel dolly kit.

Sections

1. Parts and Accessories
2. Installation Steps
 - a. Wheel Dolly Rack Axle installation
 - b. Lifting rack wheel dolly
 - c. Moving Rack
 - d. Removal of Rack Wheel Dolly

1. Parts and Accessories



2 x Rack Wheel Dollies (one for each side of rack)
Each Include with following:

- 2 Rubber Casters
- Lift Bar Base
- Axle Insert

2 x Wheel Dolly Rack Axles



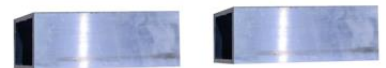
4 x Lynch Pins



2 x Wheel Dolly Lift Bar



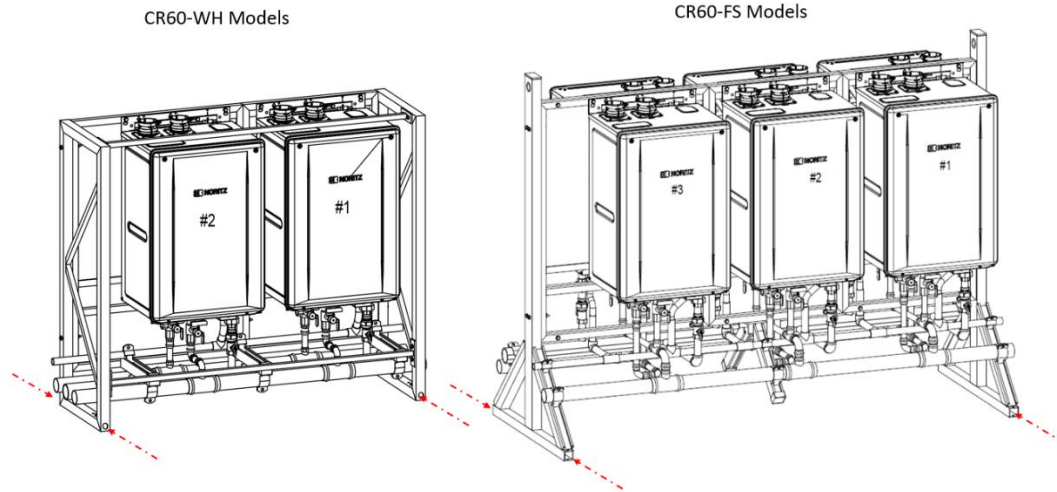
2 x Support Bars



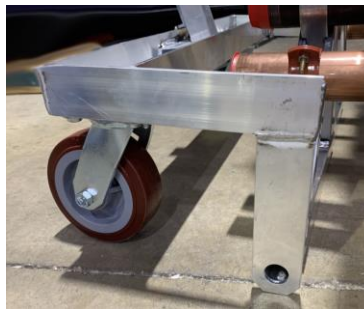
2. Installation Steps

a. Wheel Dolly Rack Axle

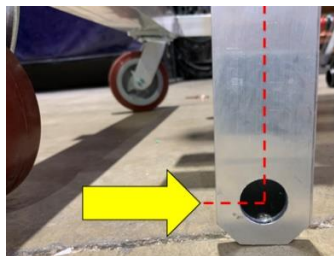
- i. Locate holes on bottom of CR60-WH Models (Top Frame), open tube on each base stand of the CR60-FS Models:



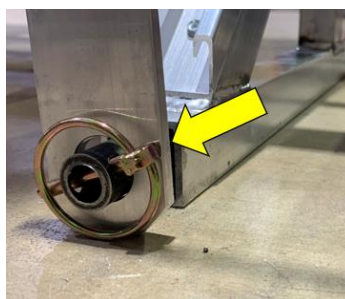
- ii. Place rack wheel dolly over opening



- iii. Center rack wheel dolly hole over opening

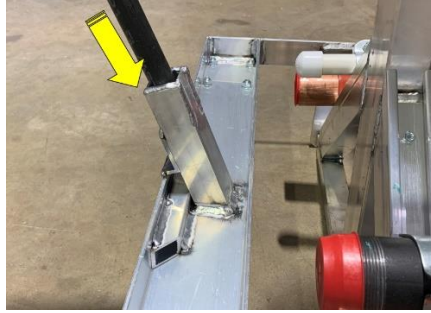


- iv. Insert and run wheel dolly rack axle through rack tube, insert lynch pins on EACH side of axle. Close lynch pins on each side.

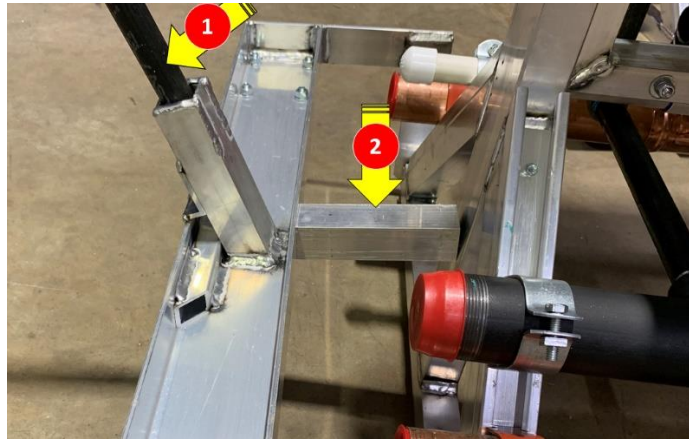


b. Lifting rack wheel dolly (Example: CR60-FS-6)

- i. Insert wheel dolly lift bar in base



- ii. (1) Pull DOWN the lift bar, (2) PLACE support bar between side of rack base and wheel dolly. Make sure to center on both sides.



- iii. Make sure BOTH casters are outward and straight for easy mobility



- iv. Repeat on other side of rack



c. Moving Rack

- i. Rack is now ready to be easily moved



- ii. 2 people recommended for better mobility



d. Removal of Rack Wheel Dolly and placing CR60 base on the ground

- i. (1) Pull DOWN the lift bar, (2) REMOVE support bar between side of rack base and wheel dolly. Remove lynch pins and wheel dolly axles.

